

# Panda 18x-400V PMS

Article: 0030220

## General Technical Data

### Water-cooled Marine Generator

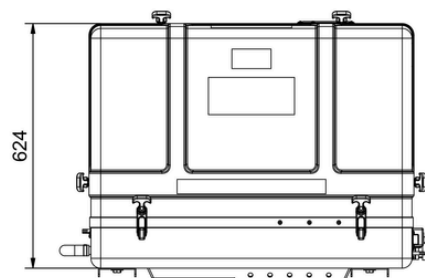
Generator Type	xSeries - Compact Power
Generator Family	18x
Generator Version	PMS
Area of Application	Marine
Capsule Type	GFK 3D
Generator Manufacturer	Fischer Panda GmbH
Windings Isolation Class	H
Control System	xControl / fpControl
Voltage Tolerance	$\pm 3V$
Cos Phi	0.85
Sound Levels dB(A) [7m/3m/1m]	55 / 65 / 69
Weight (kg)	297
Capsule Dimenisons (excl. fittings)	832 x 517 x 620



## Electrical Alternator

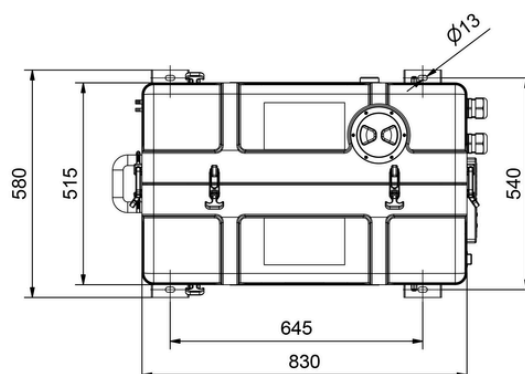
Engine Speed [rpm]	3000
Voltage	400
Frequency [Hz]	50
Number Phases	3
Nominal Performance [kW]	15,3
Nominal Performance [kVA]	18,0

## Generator Capsule / Sound Shield



## Engine

Engine Manufacturer	Kubota
Engine Type	KU D1105
No. Cylinders	3
Displacement [cm <sup>3</sup> ]	
Starter System	12 V
Emission Regulations	IMO MARPOL 73/78



## Service / Installations Kits/ Shock mountings

Service Kit	Request
Service Kit "Plus"	Request
Installation Kit "Basic"	Request
Installation kit Premium	Request
Shock mounting, captive	Request
Shock mounting, non-captive	Request

[LEARN MORE](#)

